



BACKER ELECTRIC COMPANY LIMITED

Fitting Instructions for Immersion Heater Types

O9BP3xx

("xx" Underhead Immersion length inches)

3kw 1 3/4" BSP Conform to EN 60335.2.73

Check that the heater rating label shows the voltage that conforms to your mains supply

Install the heater into the water tank or cylinder using the O-ring or gasket supplied. Use a shaped Immersion heater spanner- Stillsons should not be used. The heater may be fitted into a tank of any size, suitable to take this heater in when installed horizontal and that the heater is always fitted below the water level.

It is essential that the installer checks the water level in the tank or cylinder that the water always fully covers the heating element by a depth of at least 100mm. Under No circumstances should the heater be allowed to run dry – damage may result to the heater in addition to danger of personal injury and property damage

Check the heater for possible water leakage prior to wiring

The heater is wired with cable having a minimum size of 1.5 sq. mm., 90C elastomer insulated H05BN4-F sheathed cable to BS6500. The heater must be fully earthed and wired through a double pole switch having contact separation of at least 3mm in accordance with the wiring rules. Ensure all connections are securely made and no loose strands. Do not use excessive force when tightening terminals.

Approved Thermostat: Backer BP11

Warning: Before making any adjustments within the heater terminal box cover, isolate the heater from the mains electricity supply. DO NOT COVER the terminal box cover.

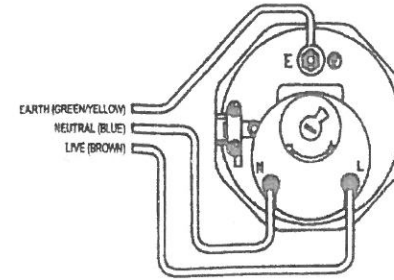
This appliance is not intended for use by persons (including children) with reduced physical, sensory or mental capabilities, or lack of experience and knowledge, Children should be supervised to ensure that they do not play with this appliance.

In the event of the manually resettable cut-out within the thermostat operating; isolate the heater from the mains supply before removing the terminal box cover. Investigate and identify the cause for the operation of the cut-out, and rectify if possible before manually resetting by pressing the reset button located on the top of the thermostat housing. It may be advisable at this time, to prevent re-occurrence, to turn down the temperature setting on the thermostat to around 55/60C

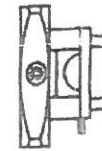
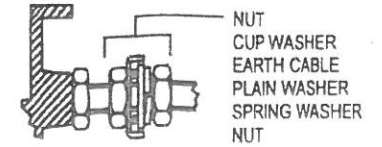
It must be noted that if the tank or cylinder is heated by a secondary source such as solar, oil or coal fired boilers producing heat higher than the cut-out pre-set, this can also cause premature operation. It is not recommended that the thermostat is set higher than 65C

Important: It is not necessary for the heater to be removed to rectify any problems with the thermostat / cut-out. If fault persists, the thermostat device can be removed and re-placed. Replacement thermostats can be obtained from Backer Electric using the details below.

BACKER BP11 Thermostat Code 13511



ASSEMBLY AND FITMENT FOR EARTH CABLE TO STUD.



CABLE GRIP ASSEMBLY
FIT CABLE GRIP MOULDING TO BRASS HEAD USING THE COUNTER SINK SCREW THROUGH THE SMALL HOLE IN THE SIDE FACE.
AFTER FITTING CABLE SECURE BY TOP STRAP USING TWO PAN HEAD SCREWS.

ENSURE CABLE IS FITTED SECURELY UNDER CABLE GRIP STRAP

Manufactured in the UK

PLEASE RETAIN THESE INSTRUCTIONS FOR FUTURE REFERENCE

Backer Electric Company Limited
Eastwood Trading Estate
Fitzwilliam Road, Rotherham S65 1TE

Tel: 01709 828292

Web: www.backerelectric.com

Email: sales@backer.co.uk